

# Key new features at a glance

## LabX titration 2.1

### Add notes to each sample

The user can add his notes to each sample. The notes will be available in reports as well as on printouts and in exported data sets.

The screenshot shows a window titled 'SOP05 - Mixed Acids'. It contains two main sections: 'Series data' and 'Sample data'. The 'Series data' section has a table with the following rows:

Field	Value
Method ID	SOP05
Series ID	SOP05 - Mixed Acids
Number of samples	5
Sample size [mL]	5.0

The 'Sample data' section has a table with the following columns: No., ID, Fixed V [mL], Corr. f, T [°C], and Note. The rows are:

No.	ID	Fixed V [mL]	Corr. f	T [°C]	Note
1	Mixed acid	5.0	1.0	25.0	
2	Mixed acid	5.0	1.0	25.0	Sample color differs from other samples in batch!
3	Mixed acid	5.0	1.0	25.0	
4	Mixed acid	5.0	1.0	25.0	
5	Mixed acid	5.0	1.0	25.0	

Below the 'Sample data' table is a 'Note' section with the text: 'Pipette 5mL of the solution into a standard 100mL beaker and add approximately 50mL of deionized water.'

### Higher efficiency through flexible job queue

The job queue is now fully editable. This means series can be edited even when they are already in the job queue. The user can also delete objects in the queue or change their order. [LabX pro only](#)

The screenshot shows a 'Series' list with columns 'Series' and 'Stat'. The series listed are: SOP05 - Mixed Acids (active), SOP06 (ready), SOP05 (ready), SOP05 - Mixed (ready), TST06 - HCl Co (ready), TST06 - HCl Co (ready), and SOP05 - Mixed (ready). A context menu is open over the 'SOP05 - Mixed' series, showing options: Run, Edit, and Remove.

### Use very long sample IDs

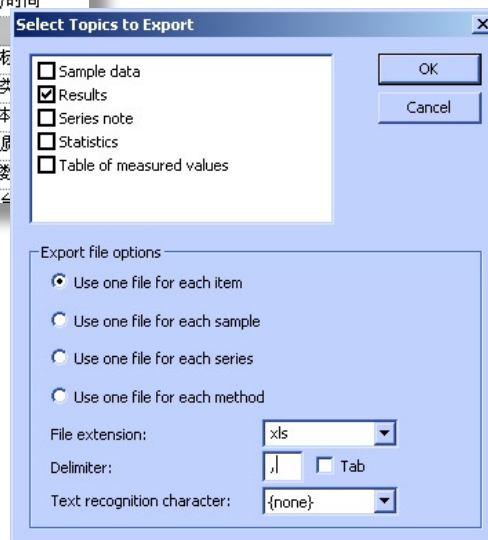
LabX now allows sample IDs with a total length of up to 120 characters or multiple IDs with a total length of 120 characters. This is often important when working with barcode readers.

1	KHP	0.10871	1.0	25.0	ID34573923-0001
2	KHP	0.11319	1.0	25.0	ID34573923-0002
3	KHP	0.14111	1.0	25.0	ID34573923-0003



### More flexible file export

It is now possible to set any delimiter, file extension etc. directly within LabX. Therefore LabX can now easily generate csv and custom file formats.



### New languages

LabX 2.1 offers 2 new languages: Chinese and Spanish. Of course, the application still comes in English, German and French as well.

Please turn this page for a more detailed listing of new features!...

## Complete list of new features of LabX titration version 2.1

Abstract	Description	pro	light
<b>Annotation for individual samples</b>	A note of up to 120 characters can be added to each sample in a series. The note is available in the reports on screen as well as on print-outs. Notes can also be exported via file export or LabX connect.	x	x
<b>Long and multiple sample IDs</b>	Sample IDs of up to 120 characters can be defined by using the Notes field. It is also possible to define multiple IDs with a total length of up to 120 characters.	x	x
<b>Delete items in the job queue</b>	Users can delete any non-running entry in the job queue.	x	
<b>Edit items in the job queue</b>	All items in the job queue can be edited. These changes have no effect on the series templates they are derived from.	x	
<b>Change order of jobs in the job queue</b>	The user can change the order of series/methods in the job queue using drag-and-drop. This functionality also allows running emergency samples.	x	
<b>Improved tool tips in control chart</b>	If the mouse pointer moves on a measurement point in a control chart, the numeric value, date and time of the measurement are displayed.	x	x
<b>Device overview</b>	Users can now view all instruments defined in LabX in one dialog box. This simplifies finding instruments which are not attached to any profile.	x	
<b>Alert for access violation</b>	The administrator receives a message if a user account has been locked e.g. because a logon failed three times.	x	
<b>Support of Chinese language</b>	LabX now offers a Chinese language user interface (simplified Chinese character set).	x	x
<b>Support of Spanish language</b>	LabX now offers a Spanish language user interface.	x	x
<b>Standard deviation for 2 samples</b>	LabX now allows the calculation of the standard deviation of 2 samples.	x	x
<b>Export and import of report templates</b>	Report templates can now be imported and exported.	x	
<b>RS232 balance parameters</b>	The full connection parameters for a balance connected via serial port can now be defined.	x	x